

Barista or Better? The Earnings of Canadian Bachelor's Graduates: A Tax Linkage Approach

Ross Finnie(rfinnie@uottawa.ca)



EPRI Education Policy
Research Initiative
Initiative de recherche sur les politiques de l'éducation

Thanks to...

- Employment and Social Development Canada (ESDC)
- StatsCan
- Participating institutions

What We Do: Track Graduates' Post-Schooling Earnings Using Tax Data

- Year-by-year after graduation
- Cohort-by-cohort
- By field of study

A New, Unique, and Powerful Approach

- Totally new perspective of graduates' outcomes
- Using accurate & timely tax-based income data
- Emerging practice at international level
- Potential to build/use further – this is just a start

Motivation: New and Powerful LLMI



- PSE Institutions
- Policy Makers
- Employers
- General public

Informing Student Choices

Data

Graduates 2005-2012



Linked to tax data

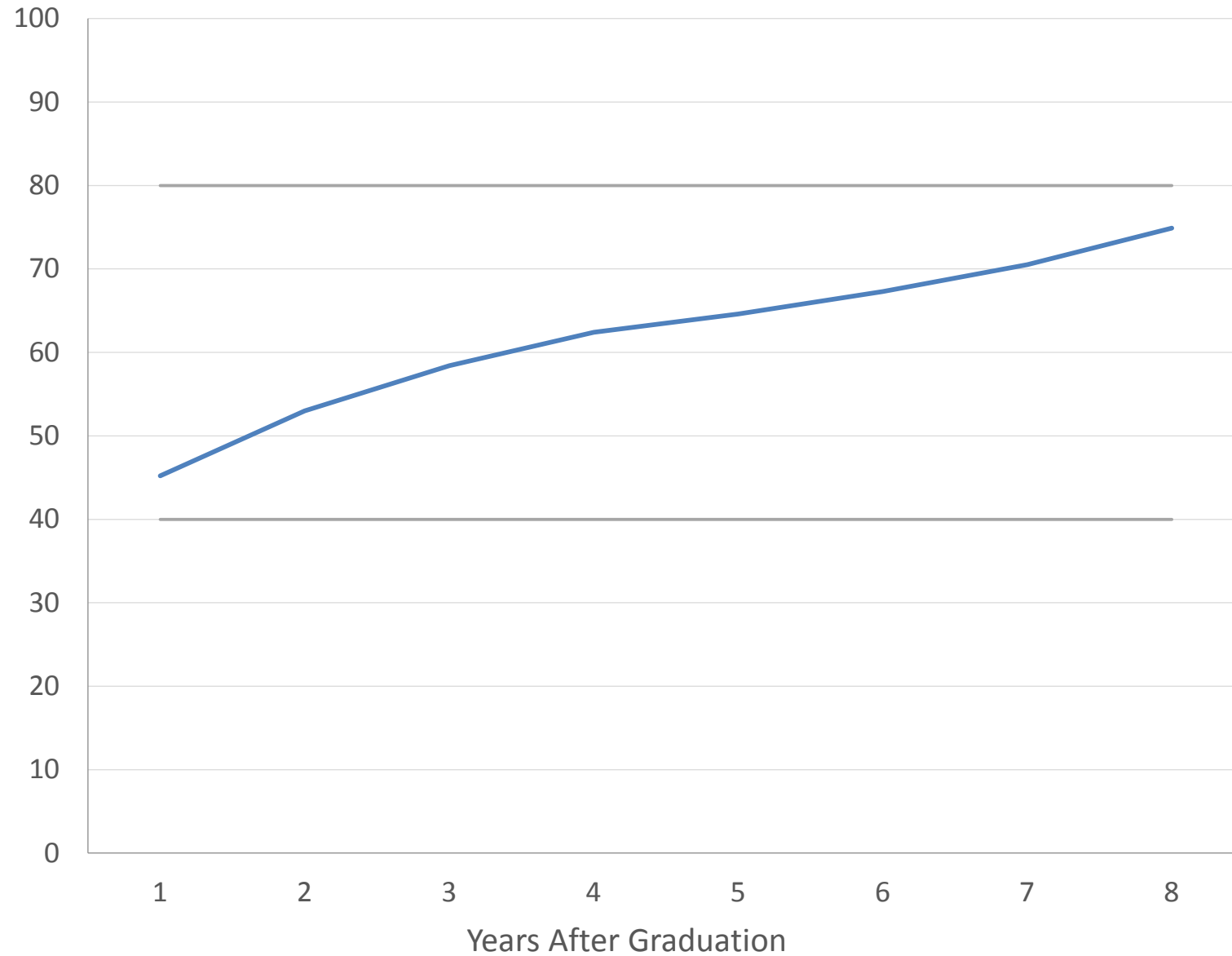
97% linkage rate

Samples and Earnings Measure

- 14 PSE institutions across 4 regions
- Annual earnings through to 2013 (reported in \$2014)
- Dropped if/where indication of further PSE
- Also exclude if earnings < \$1k (c. 3-3.5% overall)

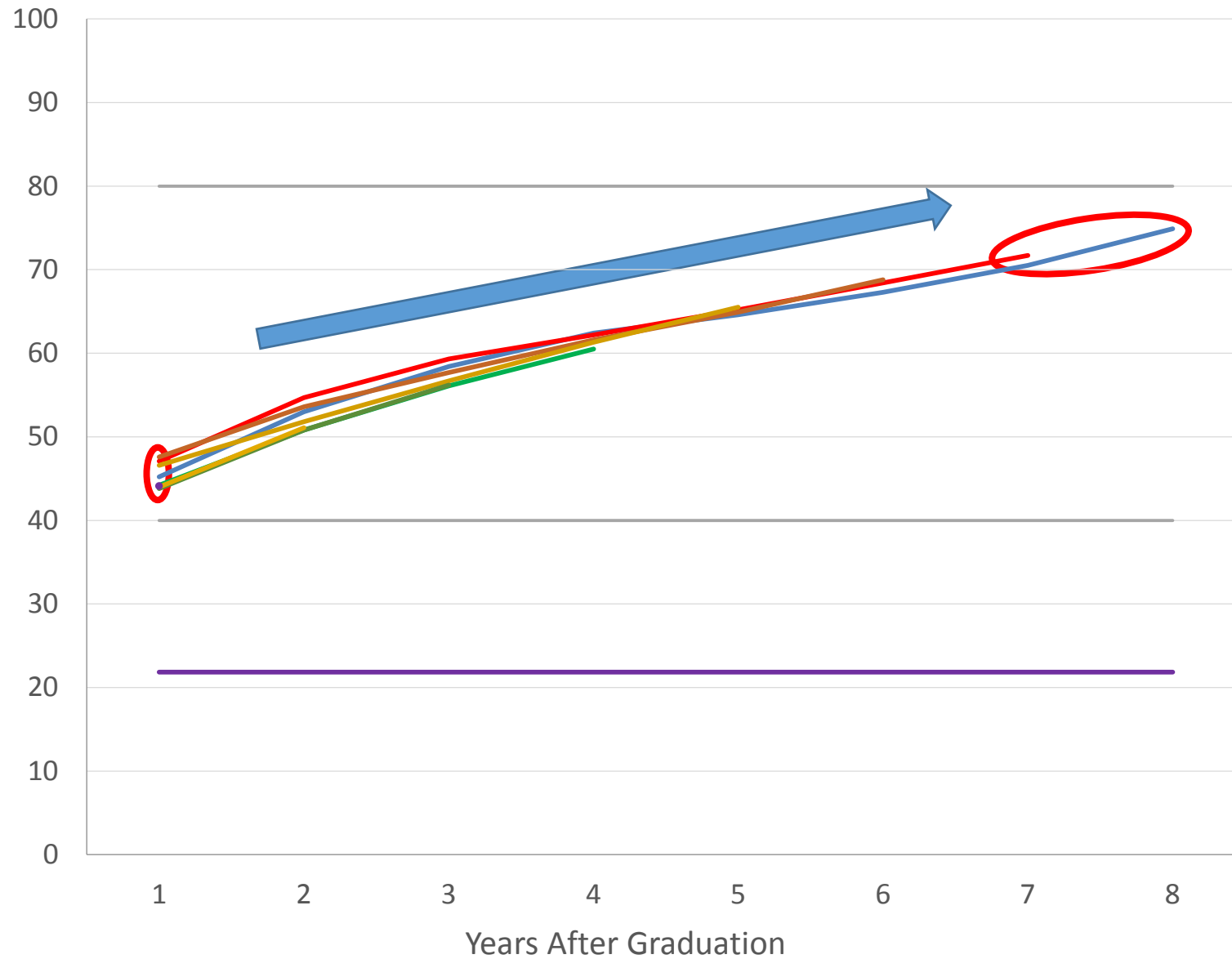
Start with 2005 (Earliest) Cohort

Mean Earnings of All Graduates (\$2014)



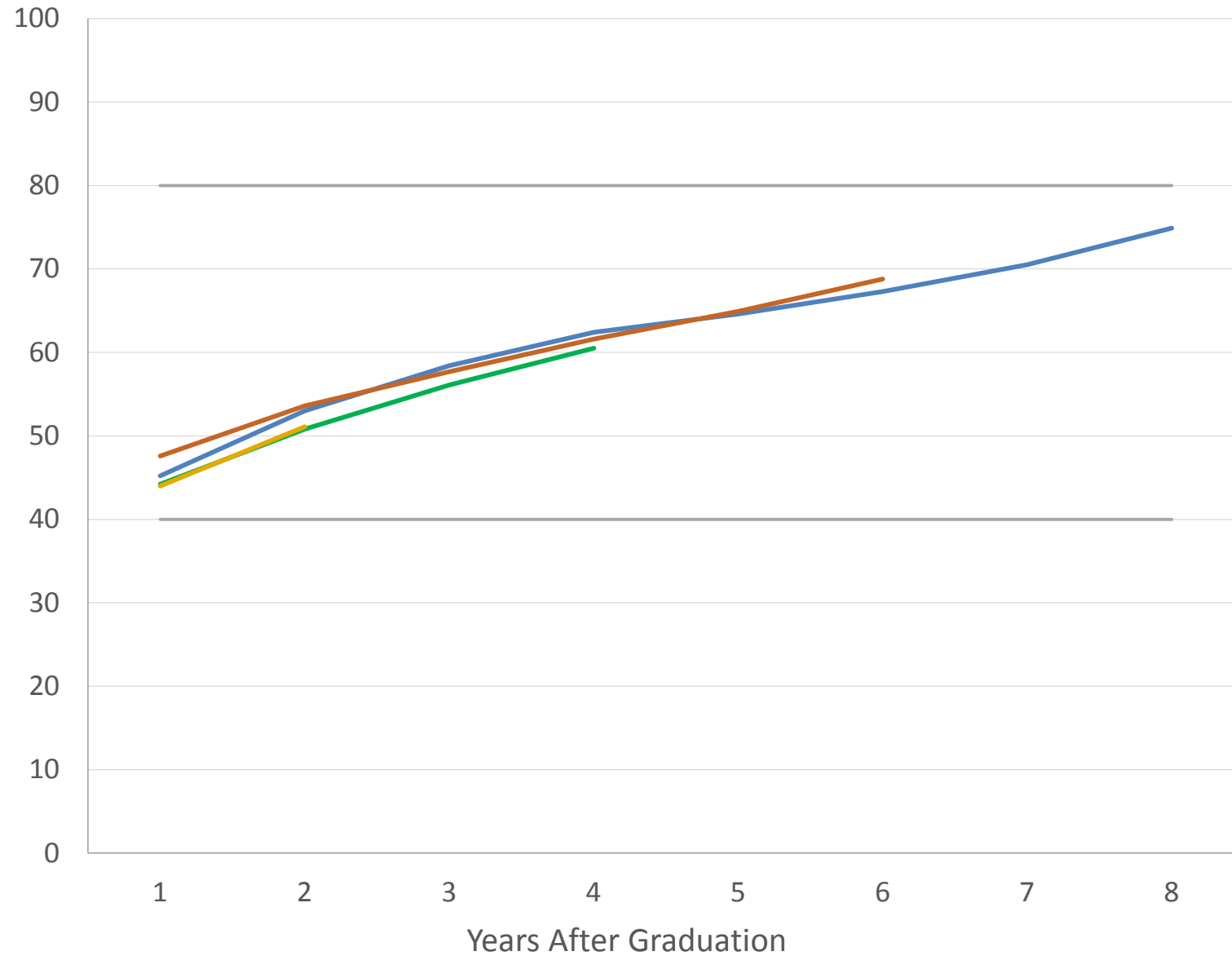
Add Other Cohorts

Mean Earnings of All Graduates (\$2014)



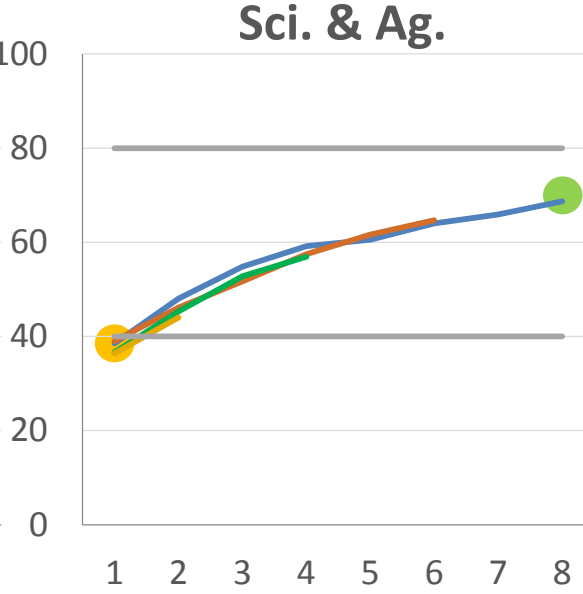
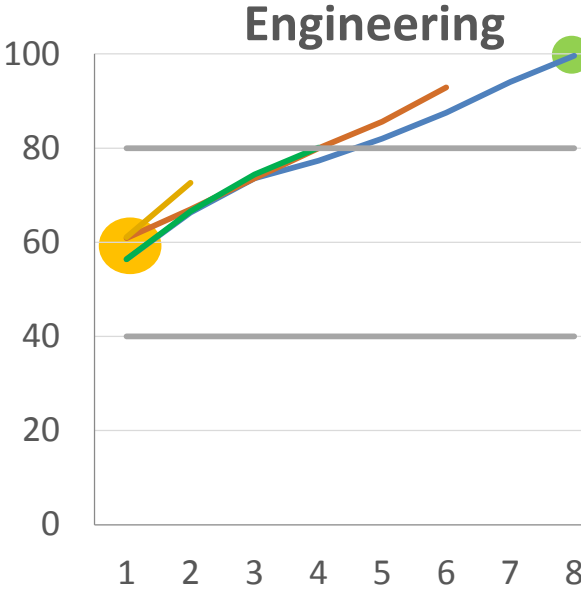
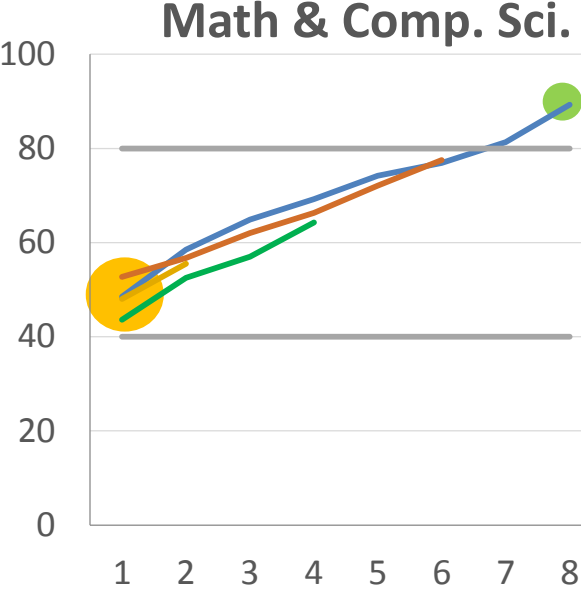
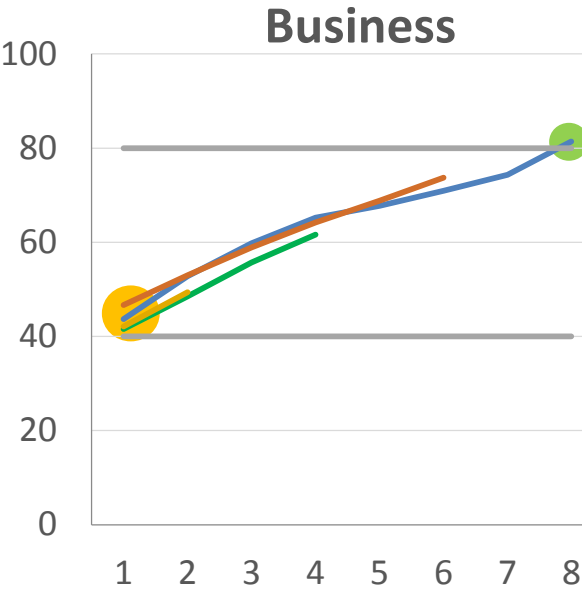
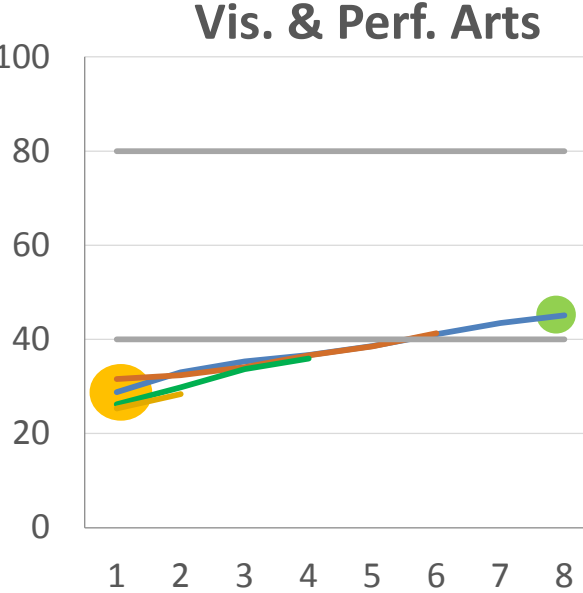
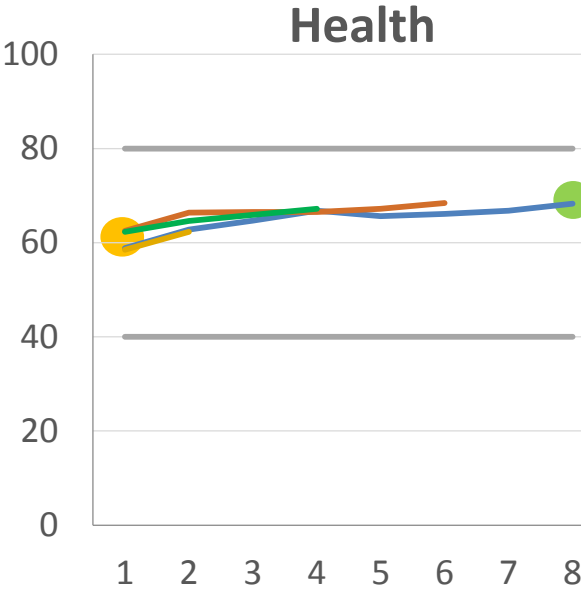
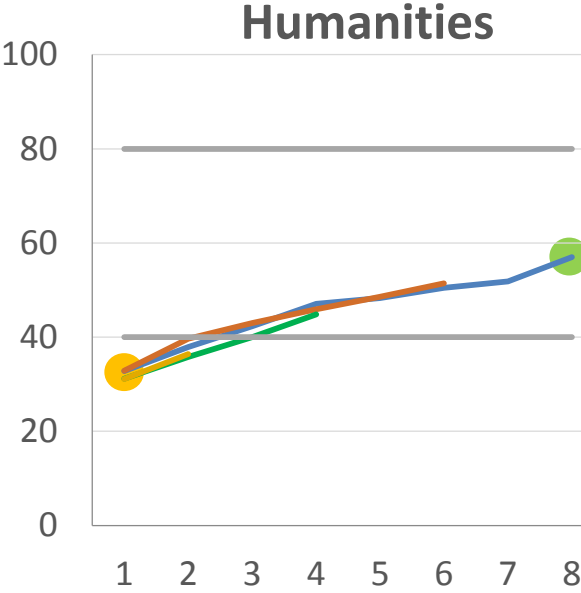
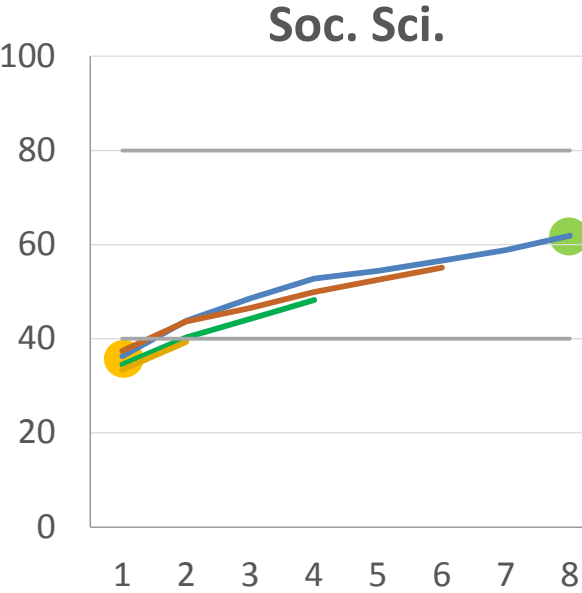
Showing Selected Cohorts:
2005, 2007, 2009, 2011

Mean Earnings of Selected Cohorts (\$2014)

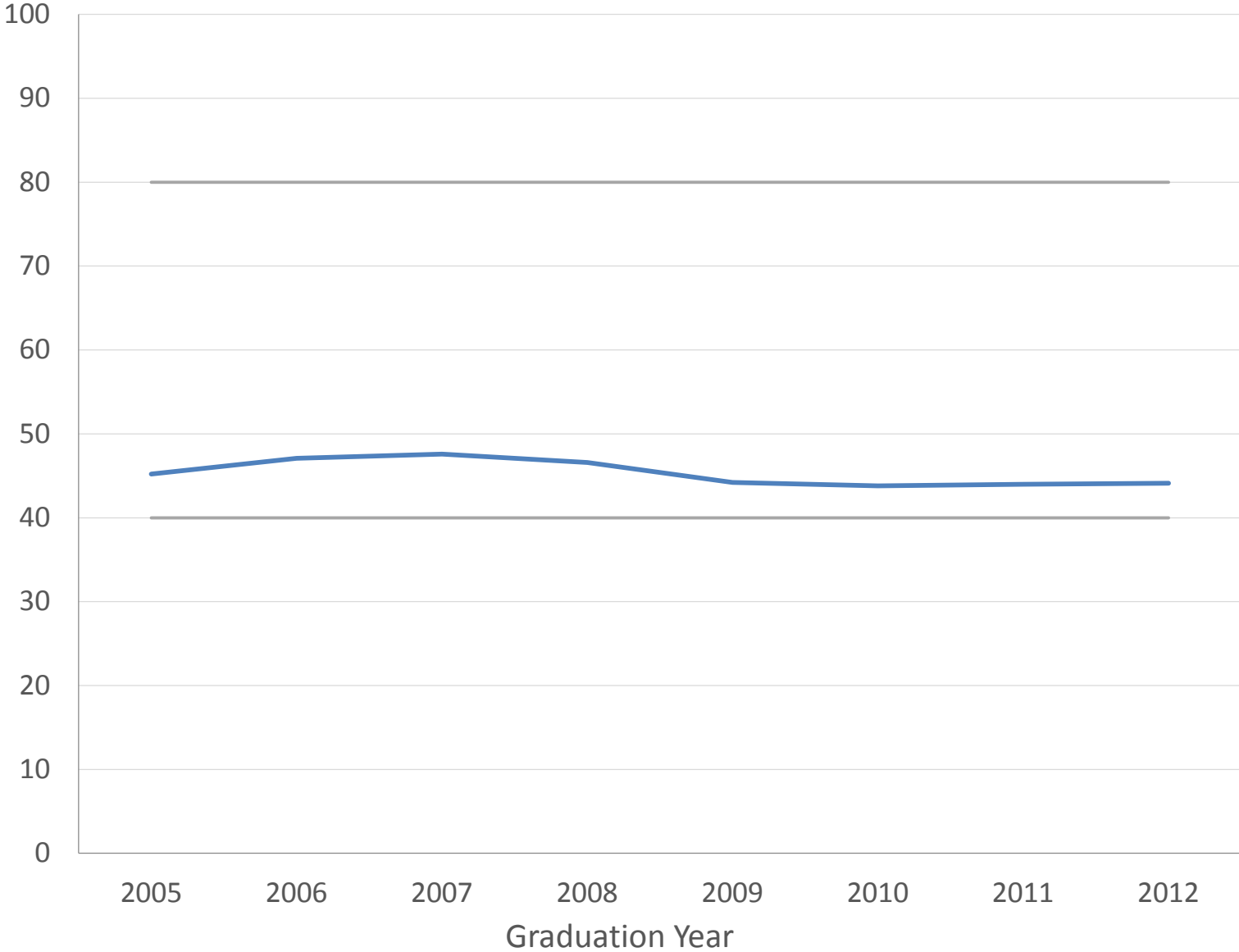


Now Compare Across Areas of Study

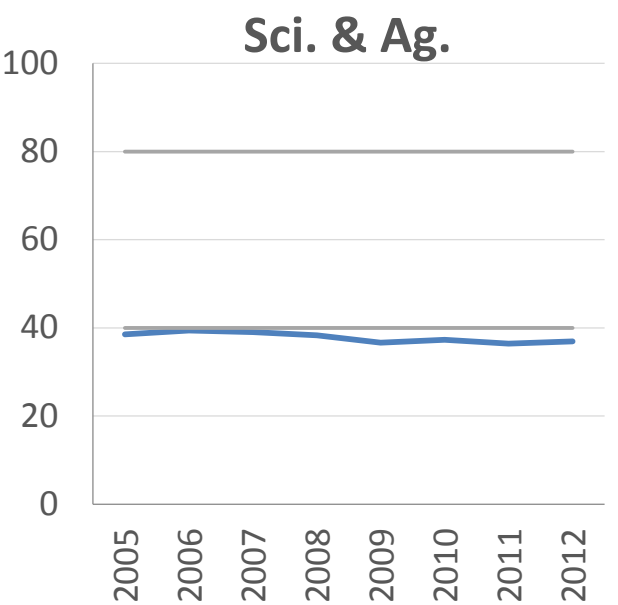
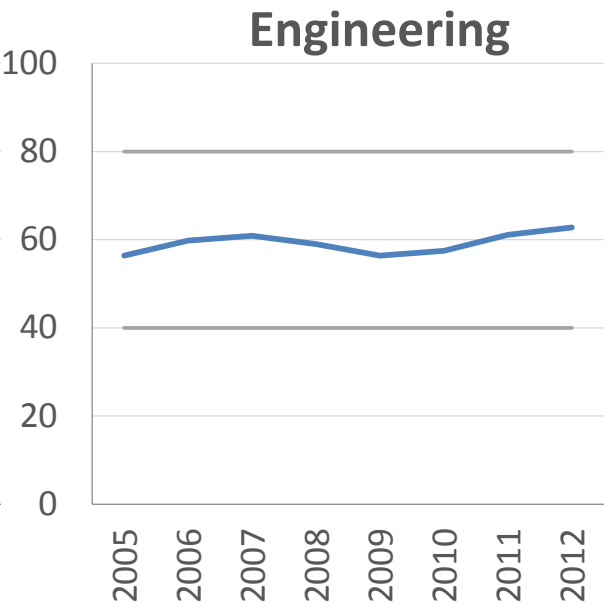
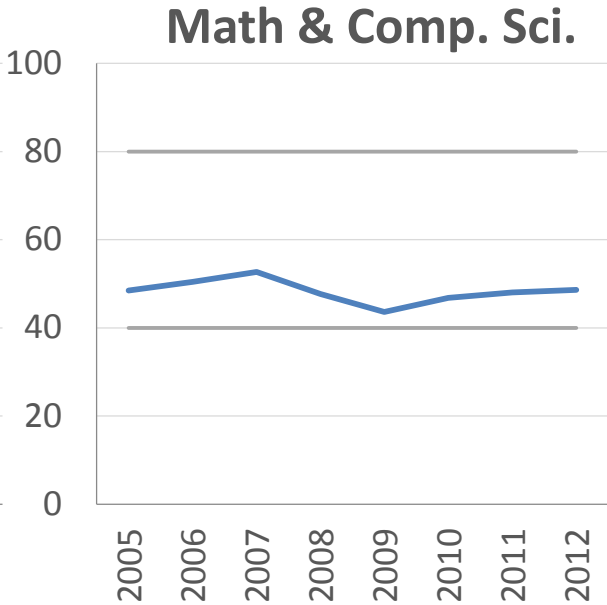
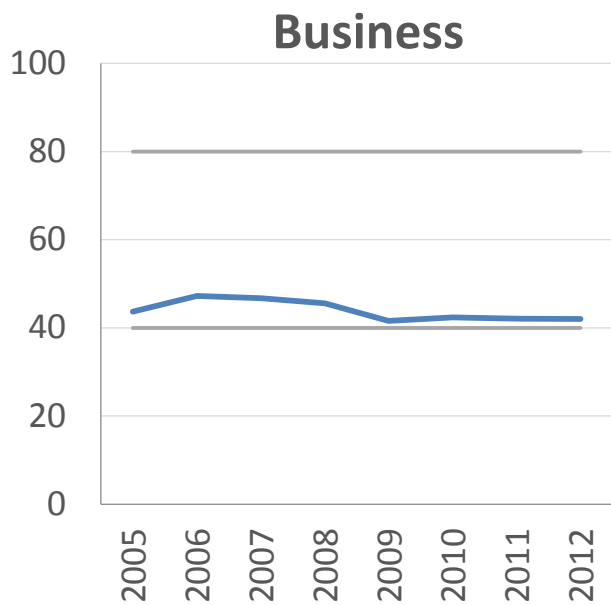
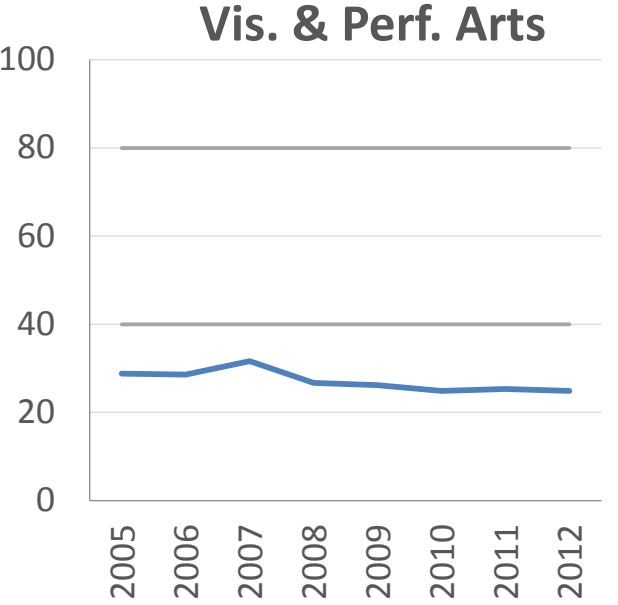
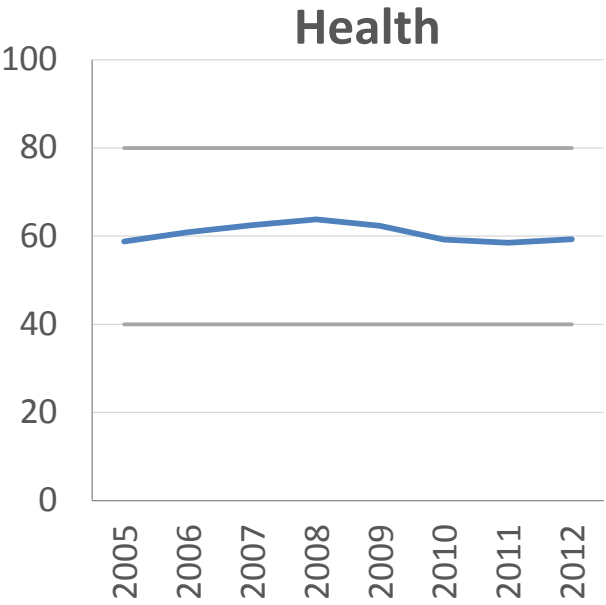
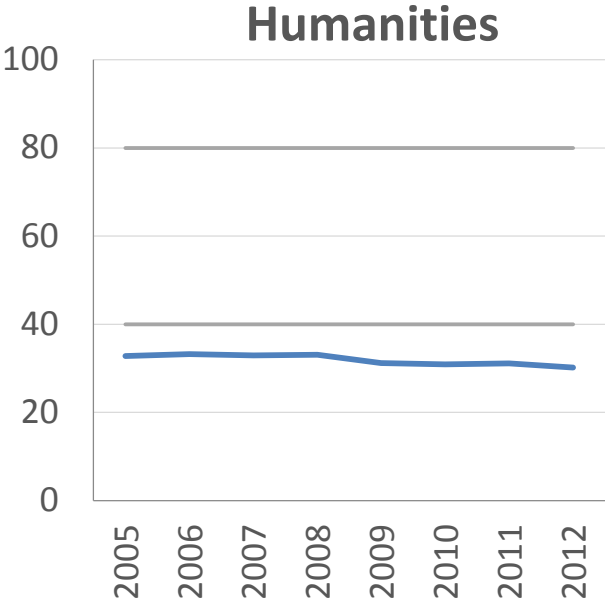
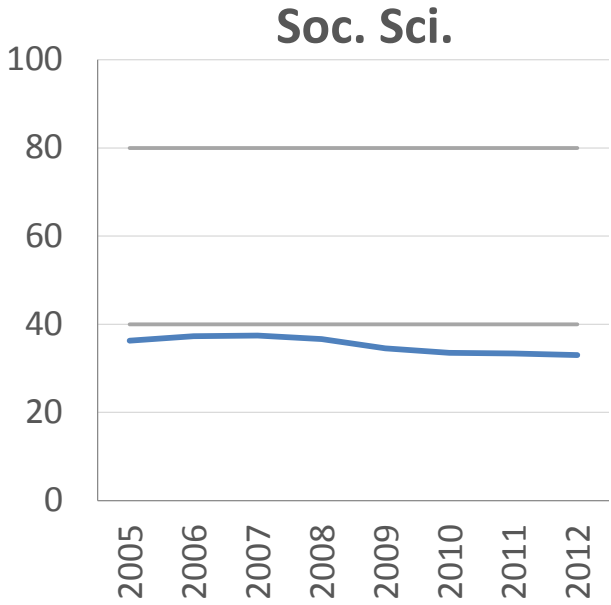
Final Earnings



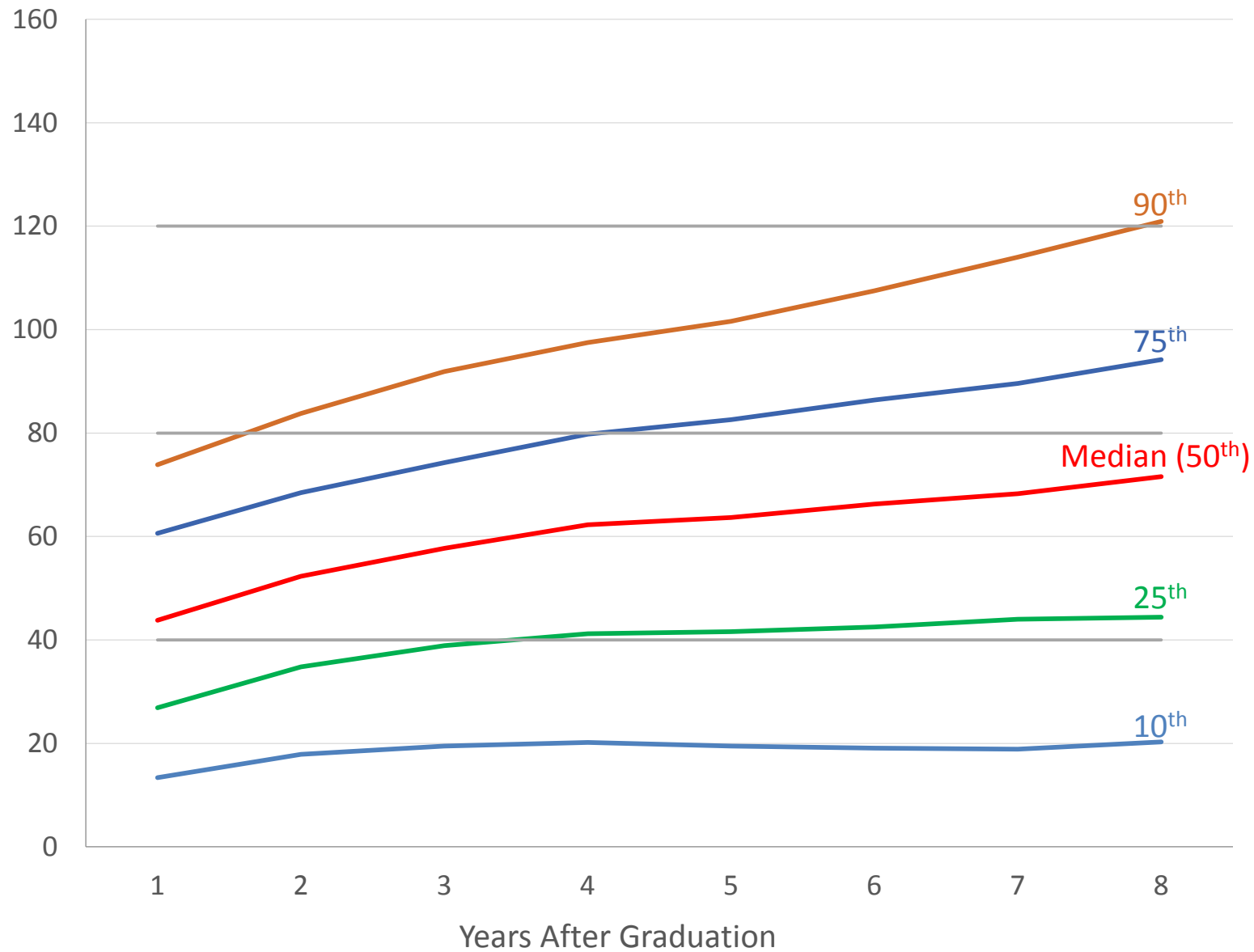
First Year Earnings, All Graduates



First Year Earnings by Area of Study



Distribution of Earnings – All Graduates, 2005 Cohort



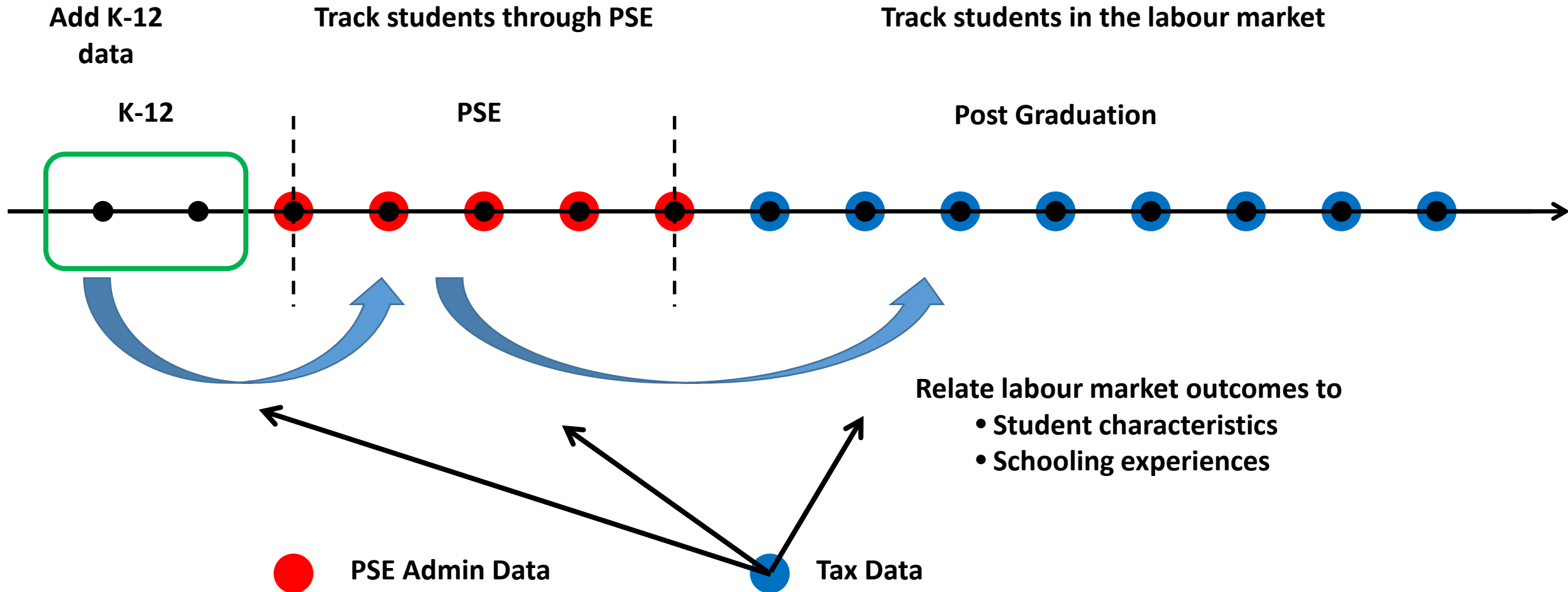
Making the Results Accessible

www.epri.ca/tax-linkage

Where to Go Next?

1. An Administrative Data Research Platform

An Administrative Data Research Platform



2. A New Skills Agenda

The Traditional Skills Agenda

Engineers
Physiotherapist
Skilled Trades
Electrician
Technician
Plumbers
Nurses
Exotic Dancer
Doctors
Welder
STEM
Pipe Fitters
Business Managers
Accountant
Programmers
Mechanic
Technologist
Personal Care Workers
Analysts
Designers

The Traditional Skills Agenda

Engineers
Physiotherapist
Technician
Welder
Accountant
Personal Care Workers
Plumbers
Nurses
STEM
Programmers
Pipe Fitters
Mechanic
Analysts
Skilled Trades
Electrician
Exotic Dancer
Doctors
Business Managers
Technologist
Designers

2 – 5 Years Experience

The New Skills Agenda



A word cloud featuring various skills and traits. The words are arranged in a non-uniform, overlapping manner. The colors used are black, blue, and red. The font sizes vary, with 'Written Communication' being the largest and 'Self-Confidence' being the smallest.

Skills and traits included in the word cloud:

- Analytical Skills
- Initiative
- Conscientious
- Self-Confidence
- Verbal Communication
- Strong Work Ethic
- Problem Solving
- Creative Thinking
- Leadership
- Interpersonal Skills
- Teamwork
- Flexibility/Adaptability
- Detail-Oriented
- Organization
- Written Communication

Barista or Better? The Earnings of Canadian Bachelor's Graduates: A Tax Linkage Approach

Ross Finnie(rfinnie@uottawa.ca)



EPRI Education Policy
Research Initiative
Initiative de recherche sur les politiques de l'éducation